

HTO 80

1-1/2" x 1-1/4" End Suction Centrifugal Hot Oil Pump

The HTO™ 80 from MP Pumps is a patented, precision-engineered solution designed to meet the rigorous demands of high-temperature fluid handling. Built for reliability and efficiency in challenging environments, this pump is ideal for industries such as plastics manufacturing, chemical processing, food production, and general industrial operations.

Key Features & Benefits:

- **High-Temperature Capability:** Handles fluid temperatures up to 650°F (343°C) without compromising performance.
- **Versatile Installation:** Supports horizontal or vertical configurations and is available with or without an electric motor, ensuring maximum flexibility for your application.
- **Advanced Seal Protection:** Features an isolated air-cooled seal chamber that uses ambient air to reduce seal temperature, extending seal life and minimizing maintenance downtime.
- **Robust Performance:** Delivers flows up to 85 GPM (19.3 m³/h) and heads up to 130 ft (40 m), providing consistent operation under heavy loads.

SPECIFICATIONS:

Suction and Discharge	1-1/2" x 1-1/4" NPT or 150# Flat Flange Option
Materials of Construction	Ductile iron
Flow	Up to 85 GPM (19.3 m³/h)
Head Feet	Up to 130' (40 m)
Impeller	5.9" (149.86 mm) steel, enclosed
Motor	Up to 3 HP (2.2 kW)
Drive Options	Close coupled 56C Close coupled 145TC Pedestal PumPAK® (without motor)
Seal	Carbon / silicon carbide / Viton
Temperature	650°F (343°C) max
Drive Sleeve	316 Stainless Steel

Application:

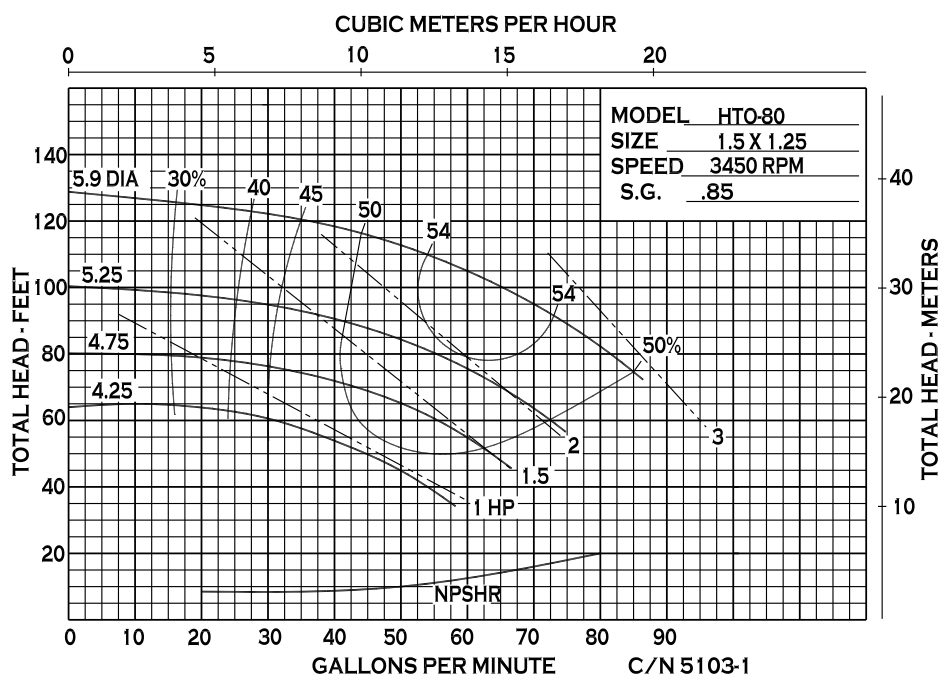
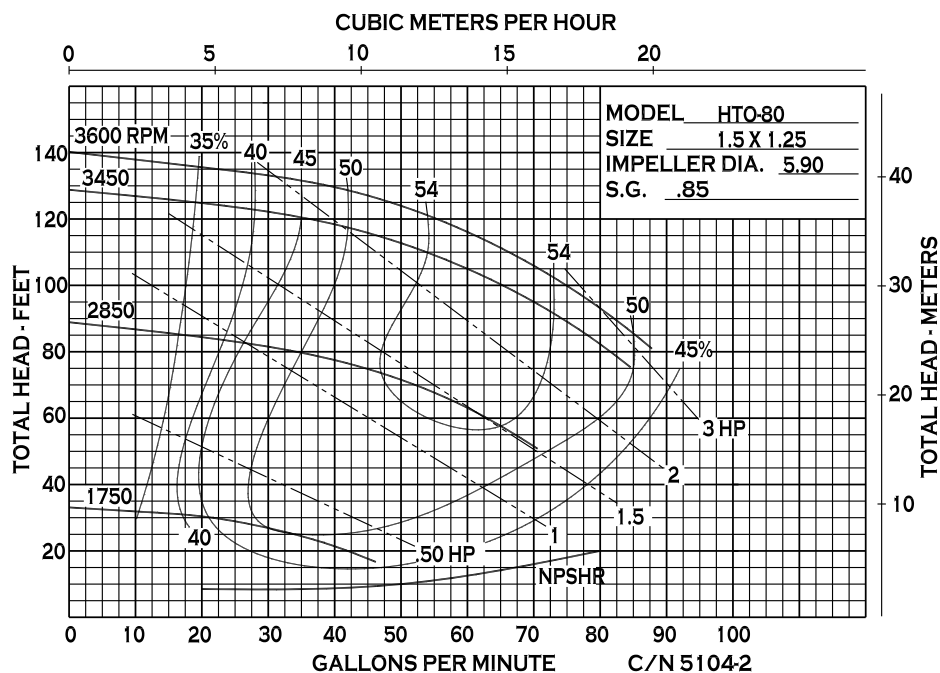
- Industrial
- OEM



An Ingersoll Rand Business

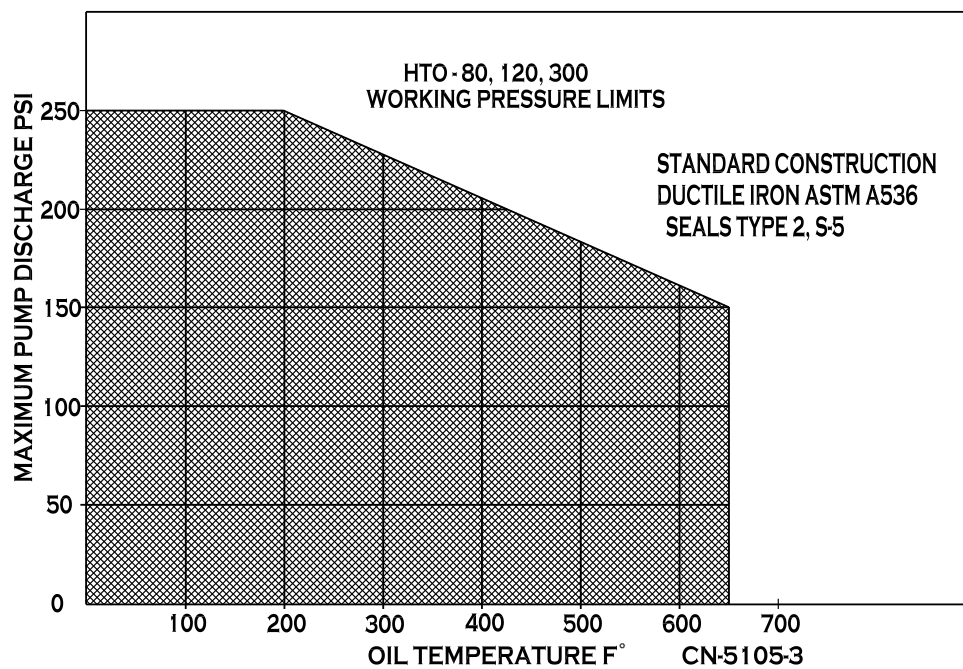
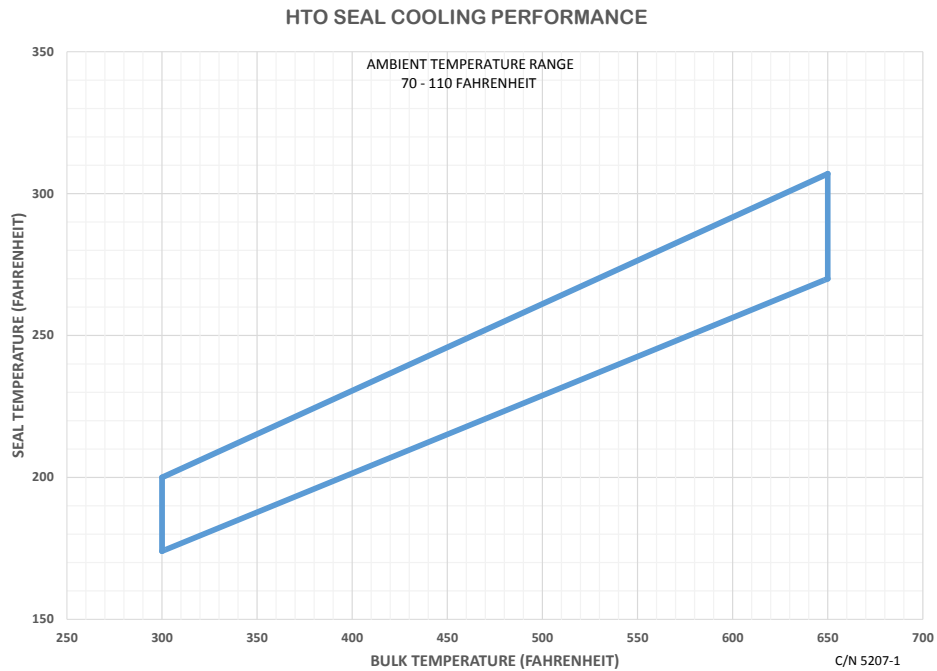
HTO 80

PERFORMANCE CURVES



12500 South Pulaski Road
Alsip, IL 60803, USA
Phone (800) 563-8006

PERFORMANCE CURVES

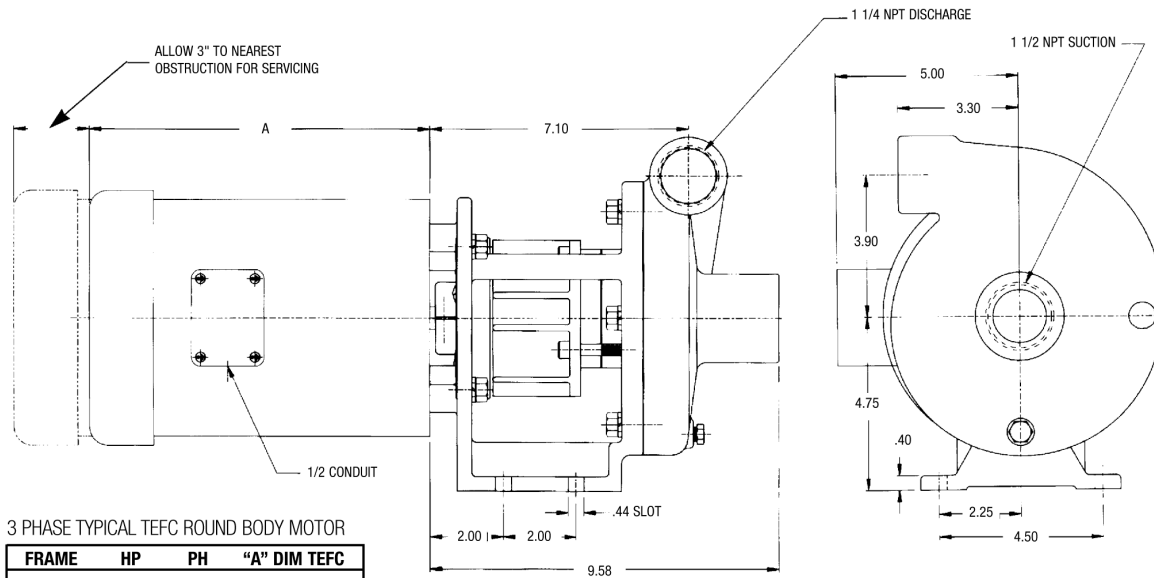




An Ingersoll Rand Business

HTO 80

DIMENSIONS

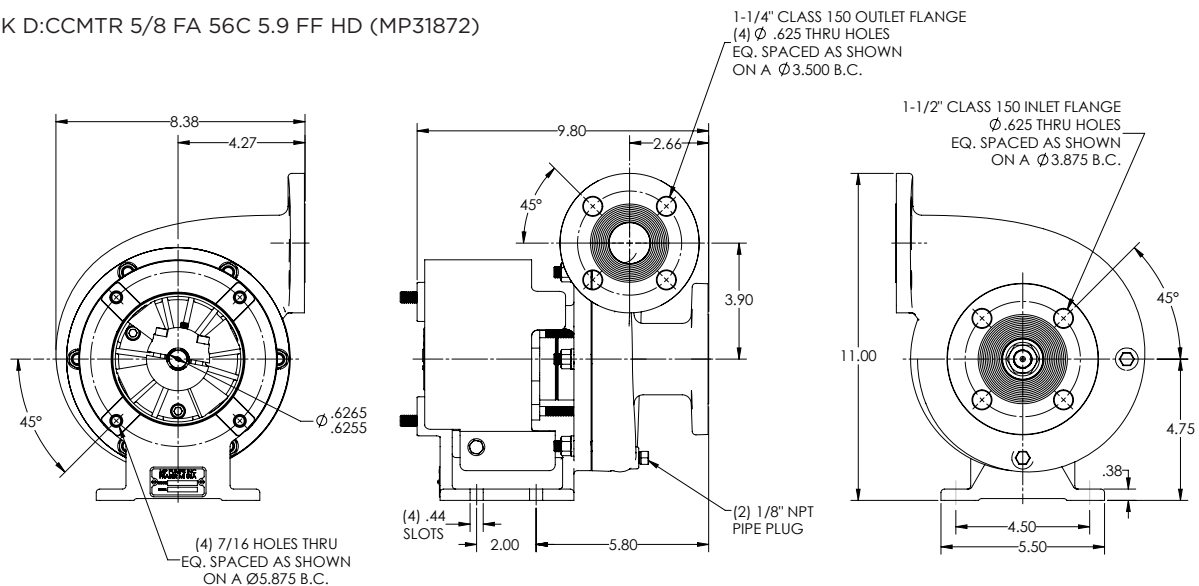


3 PHASE TYPICAL TEFC ROUND BODY MOTOR

FRAME	HP	PH	"A" DIM TEFC
56C	1	3	9.31
56C	1.5	3	9.94
56C	2	3	11.25
56C	3	3	12.12

Pump dimensions certifiable for construction purposes.
Motor dimensions dependent upon motor manufacturer.

HTO80PPK D:CCMTR 5/8 FA 56C 5.9 FF HD (MP31872)



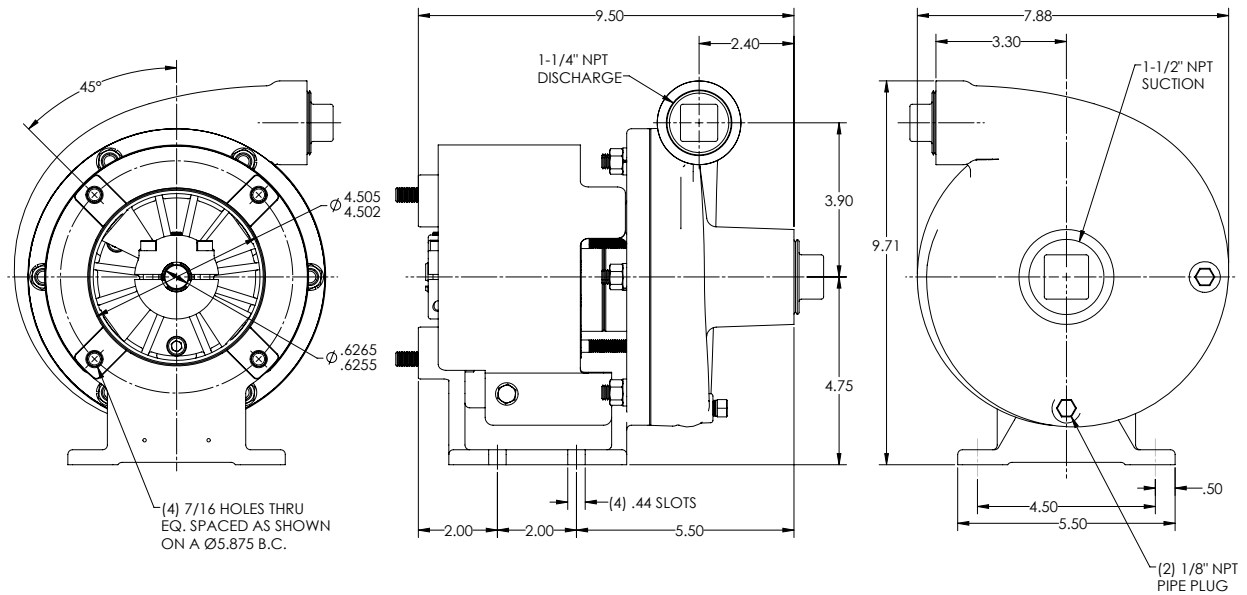
* For complete parts lists and troubleshooting guidance, please refer to the MP Pumps Installation Operation & Maintenance (IOM) Manual.



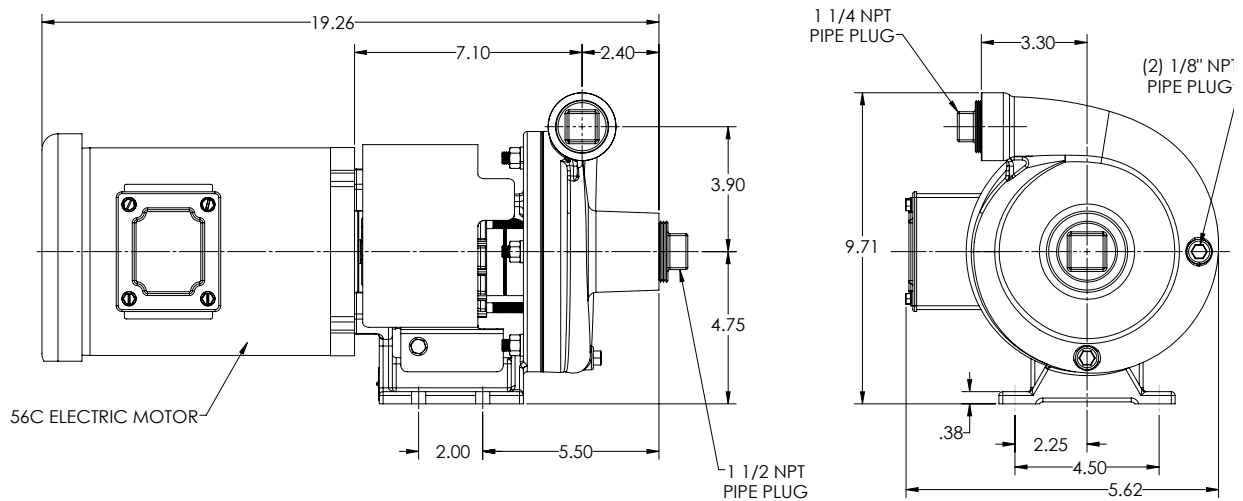
12500 South Pulaski Road
Alsip, IL 60803, USA
Phone (800) 563-8006

DIMENSIONS

HTO80PPK D:CCMTR 5/8 FA 56C 5.9 HD (MP29156)



HTO80PMP D:3-3 56C 5.9 HD (MP29411)



* For complete parts lists and troubleshooting guidance, please refer to the MP Pumps Installation Operation & Maintenance (IOM) Manual.

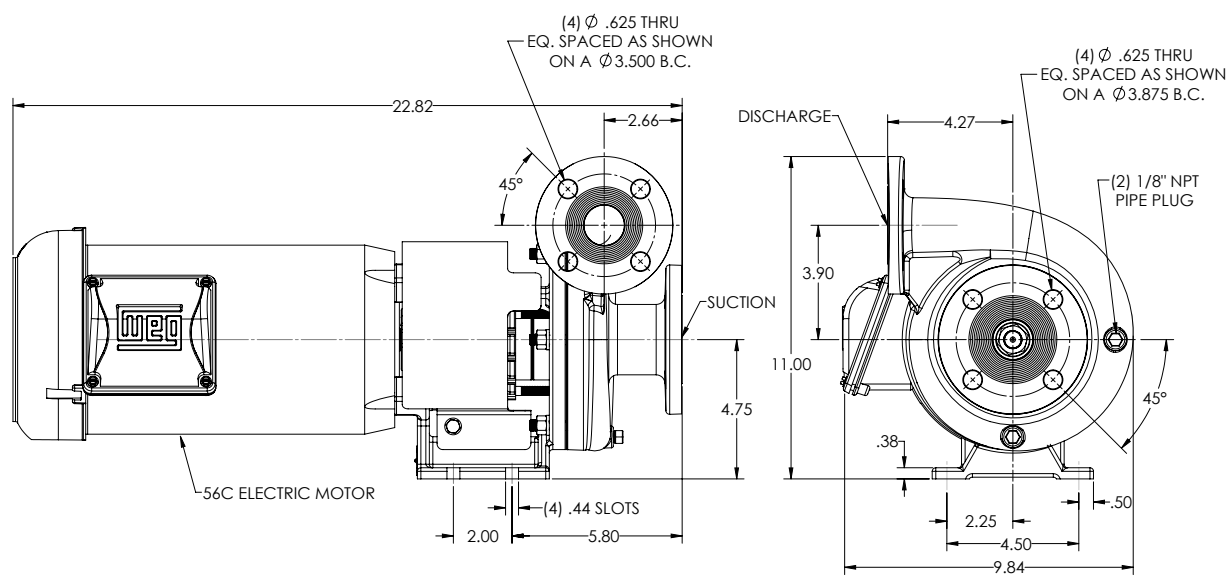


An Ingersoll Rand Business

HTO 80

DIMENSIONS

HTO80PMP D:3-3 56C 5.9 FF HD (MP32064)



* For complete parts lists and troubleshooting guidance, please refer to the MP Pumps Installation Operation & Maintenance (IOM) Manual.



12500 South Pulaski Road
Alsip, IL 60803, USA
Phone (800) 563-8006